

**Tillbridge Solar Project  
EN010142**

**Volume 6  
Environmental Statement**  
Figure 4-5: Refinement of Site Search Area to  
1500ha  
Document Reference: EN010142/APP/6.3

**Regulation 5(2)(a)  
Infrastructure Planning (Applications: Prescribed Forms and  
Procedure) Regulations 2009**

**April 2024  
Revision Number: 00**

**tillbridgesolar.com**

---

**LEGEND**

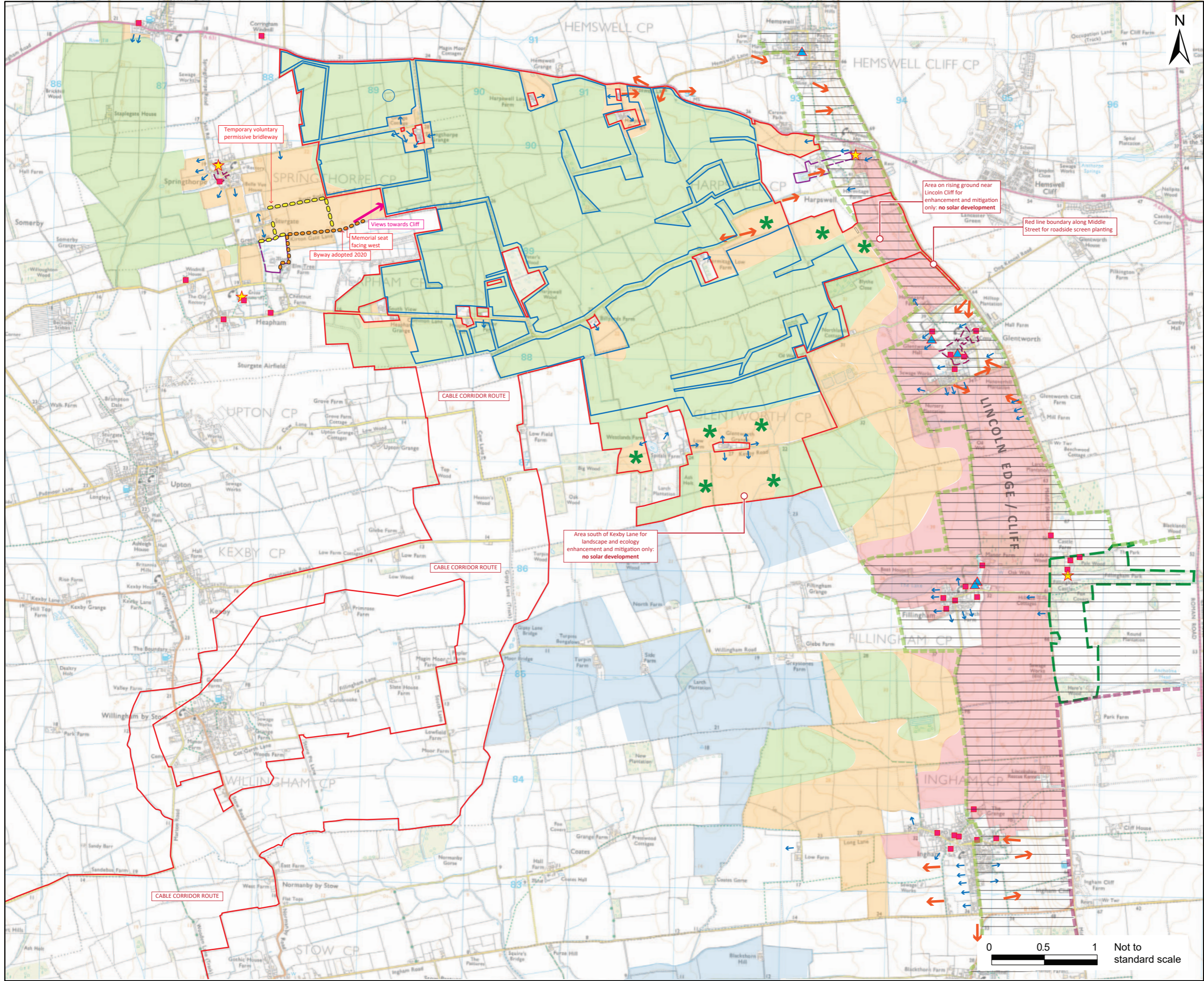
- Indicative areas of solar panels and associated infrastructure (developable areas)
- EIA Scoping Scheme Boundary
- Higher landscape/visual sensitivity areas: little or no opportunity for development without extensive mitigation. Constraints include planning designations, collective open views from settlements and setting of listed buildings.
- Medium landscape/visual sensitivity areas: development will likely require microsieving and/or higher levels of mitigation. Constraints open private residential views; sensitive elevated topography and proximity to Public Rights of Way or roads with amenity value.
- Lower landscape/visual sensitivity areas: greater capacity for development due to absence of sensitive receptors and landscape/visual constraints.
- ← Selected key views identified in Neighbourhood Plans
- ← Open views from residential receptors (based on assumptions from aerial mapping and site surveys)
- Byway (adopted 2020, not on OS map)
- Temporary voluntary bridleway (Springthorpe)
- Area of Great Landscape Value : (Central Lincolnshire Local Plan Policy LP17)
- Registered Park and Garden (non-designated Heritage Asset): Fillingham Castle
- Scheduled Monuments (designated heritage asset)
- ★ Grade I listed buildings
- ▲ Grade II\* listed buildings
- Grade I listed buildings
- Cottam solar farm (indicative outline)
- ✱ Potential priority areas for mitigation, including woodland screening

**NOTES**  
Contains Ordnance Survey Data © Crown Copyright and database right 2024.  
© Crown copyright and database rights 2024. Ordnance Survey 0100031673.

**ISSUE PURPOSE**  
DCO Submission  
**PROJECT NUMBER**  
60677969

**FIGURE TITLE**  
Refinement of Site Search Area to 1500ha

**FIGURE NUMBER**  
Figure 4-5



This drawing has been prepared for the use of AECOM's client. It may not be used, modified, reproduced or relied upon by third parties, except as agreed by AECOM or as required by law. AECOM accepts no responsibility, and denies any liability whatsoever, to any party that uses or relies on this drawing without AECOM's express written consent. All measurements must be obtained from the stated dimensions.